

JCDecaux

LIGHTING IMPACT ASSESSMENT - EXTERNALLY ILLUMINATED SIGNAGE AT
HOMEBUSH BAY DR, FLEMINGTON, NSW

22nd November, 2023
Ref: 1096.136

Lighting Impact Assessment

Externally Illuminated Outdoor Signage at Homebush Bay Dr, Flemington, NSW

Electrolight Australia
ABN: 44 600 067 392
info@electrolight.com
www.electrolight.com

DATE	REV	COMMENT	PREPARED BY	CHECKED BY
22/11/23	REV B	For Information	CB	RS

4/414 Bourke St
Surry Hills, NSW 2010
T + 612 9267 4777

CONTENTS

1. INTRODUCTION	3
2. DEFINITIONS	3
2.1 Illuminance	3
2.2 Luminance	3
2.3 Luminous Intensity	3
2.4 Dynamic Content	3
2.5 Obtrusive Light	3
2.6 Threshold Increment	3
2.7 Environmentally Sensitive Area	3
2.8 AGI32 Light Simulation Software	4
2.9 Upward Light Ratio Luminaire (ULR _L)	4
3. SITE DESCRIPTION AND SCOPE	4
4. DESIGN GUIDELINES AND STANDARDS	4
5. LUMINANCE ASSESSMENT	5
6. AS4282 ASSESSMENT	6
7. SEPP ASSESSMENT	9
8. SUMMARY	10
9. DESIGN CERTIFICATION	11
APPENDIX A	12
APPENDIX B	14
APPENDIX C	16
APPENDIX D	19

1. INTRODUCTION

Electrolight have been appointed by JCDecaux to undertake a Lighting Impact Assessment on the existing externally illuminated pylon signage on Homebush Bay Dr, Flemington, NSW. The objective of the assessment is to report on compliance with the State Environmental Planning Policy (Industry and Employment) 2021, NSW Transport Corridor Outdoor Advertising and Signage Guidelines, and AS/NZS 4282:2023 Control of the Obtrusive Effects of Outdoor Lighting.

2. DEFINITIONS

2.1 Illuminance

The physical measure of illumination is illuminance. It is the luminous flux arriving at a surface divided by the area of the illuminated surface. Unit: lux (lx); 1 lx = 1 lm/m².

(a) Horizontal illuminance (E_h) The value of illuminance on a designated horizontal plane

(b) Vertical illuminance (E_v) The value of illuminance on a designated vertical plane

Where the vertical illuminance is considered in the situation of potentially obtrusive light at a property boundary it is referred to as environmental vertical illuminance (E_{ve}).

2.2 Luminance

The physical quantity corresponding to the brightness of a surface (e.g. a lamp, luminaire or reflecting material such as the road surface) when viewed from a specified direction. SI Unit: candela per square metre (cd/m²) – also referred to as “nits”.

2.3 Luminous Intensity

The concentration of luminous flux emitted in a specified direction. Unit: candela (cd).

2.4 Dynamic content

Where the luminous image, pattern, colour or direction of light changes over an interval of less than 60 seconds

2.5 Obtrusive Light

Spill light which, because of quantitative or directional attributes, gives rise to annoyance, discomfort, distraction, or a reduction in ability to see essential information such as transport signals

Note 1 to entry: Obtrusive light includes the impact on humans and environmental receivers.

2.6 Threshold Increment

The measure of disability glare expressed as the percentage increase in luminance contrast threshold required between an object and its background for it to be seen equally well with a source of glare present

NOTE: The required value is a maximum for compliance of the lighting scheme.

2.7 Environmentally Sensitive Area (ESA)

Area of ecological value including, bushland, waterways and marine and coastal areas

2.8 AGI32 Light Simulation Software

AGI32 (by U.S. company Lighting Analysts) is an industry standard lighting simulation software package that can accurately model and predict the amount of light reaching a designated surface or workplane. AGI32 has been independently tested against the International Commission On Illumination (CIE) benchmark, CIE 171:2006, Test Cases to Assess the Accuracy of Lighting Computer Programs.

2.9 Upward Light Ratio Luminaire (ULR_L)

The ratio of the luminous flux of a luminaire that is emitted, at and above the horizontal, divided by the total luminaire flux when the luminaire is mounted in its designed position, and excluding reflected light from surfaces or obstructions.

3. SITE DESCRIPTION AND SCOPE

The externally illuminated signage is located on Homebush Bay Dr, Flemington, NSW. The signage is oriented towards the northeast-bound direction of traffic on Homebush Bay Dr. The total active display (illuminated) area of the proposed signage is 42.41 m². Refer to Appendix A for proposed signage location plan, elevations and photomontages.

The existing pylon signage is illuminated using three LED floodlights (specification unknown) mounted on bracket arms fixed to the top of the signage. The signage lighting operates all night and is switched off during the day. The signage does not include any dynamic content.

Environmental impact assessments, including the management of artificial light for the protection of specific entities protected by environmental legislation, is beyond the scope of this assessment.

4. DESIGN GUIDELINES AND STANDARDS

The Lighting Impact Assessment will review the existing externally illuminated pylon signage against the following Criteria, Design Guidelines and Standards.

- State Environmental Planning Policy (Industry and Employment) 2021 (Refer Appendix C) (**SEPP Industry and Employment**)
- Transport Corridor Outdoor Advertising & Signage Guidelines 2017 (**Transport Guidelines**)
- AS/NZS 4282:2023 Control of the Obtrusive Effects of Outdoor Lighting (**AS4282**)

5. LUMINANCE ASSESSMENT

The maximum permissible night time luminance of the signage is determined by the existing lighting environment of its surroundings. AS4282 outlines maximum average luminances for different Environmental Zones as shown in Table 1 below:

TABLE 1 - MAXIMUM AVERAGE NIGHT TIME LUMINANCE FOR SIGNAGE		
	Description	Max Average Luminance (cd/m2)
A4	High district brightness e.g. Town and city centres and other commercial areas, residential areas abutting commercial areas, industrial and Port areas and Transport Interchanges	350
A3	Medium district brightness e.g. Suburban areas in towns and cities, generally roadways with streetlighting through suburban, rural or semi-rural areas	250
A2	Low district brightness e.g. Sparsely inhabited rural and semi-rural areas, generally roadways without streetlighting through suburban, rural or semi-rural areas other than intersections	150
A1	Dark e.g. Relatively uninhabited rural areas (including terrestrial, marine, aquatic and coastal areas), generally roadways without streetlighting through rural areas	50
A0	Intrinsically Dark e.g. UNESCO Starlight Reserve, IDA: Dark Sky Parks, Reserves or Sanctuaries, major optical observatories, other accreditations for dark sky places for example astrotourism, heritage value, astronomical importance, wildlife/ ecosystem protection, lighting for safe access may be required	0.1

Based on an assessment of the surrounding environment, the existing signage is located within Environmental Zone A4 under AS4282, therefore, the maximum night time luminance is 350cd/m2.

AS4282 does not include limits for daytime operation of illuminated signage. However, the Transport Guidelines outlines maximum permissible luminance limits for various lighting conditions, including daytime. Under the Transport Guidelines, the proposed signage is classified as being within Zone 3, which is described as an area with generally medium off-street ambient lighting e.g. small to medium shopping/ commercial centres. The maximum night time luminance of externally illuminated signage within Zone 3 with an area over 10m2 is 200cd/m2 (taken to be 25% of the daytime limit as outlined in the previous revision of the Guidelines). The luminance limits for operation of the signage during the daytime are not applicable as the signage is switched off during the day.

Table 2 outlines the maximum luminance levels to comply with AS4282 and the Transport Guidelines for the various lighting conditions listed below:

TABLE 2 - LUMINANCE LEVELS FOR DIGITAL ADVERTISEMENTS		
Lighting Condition	Max Permissible Luminance (cd/m2)	Compliant
Day	N/A - OFF	✓
Night Time	79*	✓

*The maximum permissible Night time luminance allowable to comply with the Department Guidelines and AS4282 is actually 200 cd/m2. The lower luminance limit shown is based on the existing operating luminance limit of the signage, which was measured by Electrolight - refer Measurement Report in Appendix D. It is intended that the night time luminance of the signage remain unchanged for the permit extension.

6. ILLUMINANCE, THRESHOLD INCREMENT & UPWARD LIGHT ASSESSMENT

The existing signage has been assessed against the lighting criteria and requirements outlined in AS4282.

AS4282 provides limits for different obtrusive factors associated with dark hours (night time) operation of outdoor lighting systems. Two sets of limiting values for spill light are given based on whether the lighting is operating before a curfew (known as “pre-curfew” operation) or operating after a curfew (known as post-curfew or curfewed operation). Pre-curfew spill lighting limits are higher than post-curfew values, on the understanding that spill light is more obtrusive late at night when residents are trying to sleep. Under AS4282, the post-curfew period is taken to be between 11pm and 6am daily. As the signage operates all night, the signage will be assessed against the more stringent post-curfew limits.

Illuminance Assessment

The AS4282 assessment includes a review of nearby residential dwellings and calculation of the amount of illuminance (measured in Lux) that the properties are likely to receive from the signage during night time operation.

The acceptable level of illuminance will in part be determined by the night time lighting environment around the dwellings. AS4282 categorises the night time environment into different zones with maximum lighting limits as shown in Table 3 below:

TABLE 3 - MAXIMUM VALUES OF LIGHT TECHNICAL PARAMETERS			
	Max Vertical Illuminance (lx)		Description
	Pre-curfew	Post-curfew	
A4	25	5	High district brightness e.g. Town and city centres and other commercial areas, residential areas abutting commercial areas, industrial and Port areas and Transport Interchanges
A3	10	2	Medium district brightness e.g. Suburban areas in towns and cities, generally roadways with streetlighting through suburban, rural or semi-rural areas
A2	5	1	Low district brightness e.g. Sparsely inhabited rural and semi-rural areas, generally roadways without streetlighting through suburban, rural or semi-rural areas other than intersections
A1	2	0.1	Dark e.g. Relatively uninhabited rural areas (including terrestrial, marine, aquatic and coastal areas), generally roadways without streetlighting through rural areas
A0	0	0	Intrinsically Dark e.g. UNESCO Starlight Reserve, IDA: Dark Sky Parks, Reserves or Sanctuaries, major optical observatories, other accreditations for dark sky places for example astrotourism, heritage value, astronomical importance, wildlife/ ecosystem protection, lighting for safe access may be required

Based on an assessment of the surrounding areas, the nearest dwellings with potential views to the signage are at the following locations:

Address	Zone
4-10 Marlborough Rd	A4
6-12 Courallie Ave	A4
14-20 Courallie Ave	A3
5-9 Courallie Ave	A3

As such, the dwellings above will form the focus of the illuminance assessment.

In addition to the above, the following Environmentally Sensitive Area/s with potential views to the sign were also assessed:

Address	Zone
ESA- Parramatta Rd and Homebush Bay Dr	A4

The existing signage (and surrounding environment) was modeled in lighting calculation program AGI32 to determine the effect (if any) of the light spill from the existing signage. As the floodlights face away from the closest residential dwellings, the only potential illuminance is from reflected light from the signage surface. Photometric data for the signage was therefore based on a diffused light panel (approximating a lambertian emitter) with the maximum luminance corresponding to the night time limits outlined in Section 5. Appendix C shows the lighting model and the results of the calculations.

It should be noted that some of the houses are shielded by retaining walls, fences or mature vegetation, which effectively obstructs the spill light of the signage. However calculations were undertaken assuming that there were no obstructions present.

Residential Dwellings

Under the Standard, the maximum allowable illuminance to residential properties is 5 Lux for Zone A4 and 2 Lux for Zone A3 (as outlined in Table 3). It can be seen from the lighting model that the maximum illuminance for Zone A3 properties is 0.07 lux at 14-20 Courallie Ave and 5-9 Courallie Ave, and the maximum illuminance for Zone A4 properties is 0.12 lux at 4-10 Marlborough Rd.

The existing signage therefore complies with the relevant illuminance limits for nearby residential dwellings.

Environmentally Sensitive Areas

It can be seen from the lighting model that the maximum illuminance to the Environmentally Sensitive Areas in Zone A4, between Parramatta Rd and Homebush Bay Dr, is 0.84 lux. This illuminance level above complies with the maximum AS4282 limits of 5 lux for Zone A4. There are no Environmentally Sensitive Areas identified in any other zones.

Threshold Increment Assessment

As the floodlights face away from approaching (northbound) traffic, the only potential glare to northbound drivers is from reflected light from the signage surface. The Threshold Increment was calculated for the northbound traffic approaches on Homebush Bay Dr, and the eastbound traffic approaches on Parramatta Rd. The calculation grids were located at 1.5m above ground level with a viewing distance of between 10m to 200m from the signage and a windscreen cutoff angle of 20 degrees (as outlined in AS1158). The calculation results show that the Threshold Increment does not exceed 0.24% for any traffic approach (the allowable maximum under the standard is 20%).

In order for the signage to comply with the Threshold Increment requirements for southbound traffic on Homebush Bay Drive, the floodlights should be fitted with baffles (glare shields) to prevent obtrusive illumination from being visible to southbound traffic on Homebush Bay Drive.

Upward Waste Light Assessment

In order to reduce light pollution and associated environmental impacts, AS4282 includes requirements that limit upward waste light into the night sky from signage. Clause 3.3.3.4.c) of AS4282 states that Externally lit signs and billboards shall be lit from the top and shall have a ULR_L or ULR_S of no greater than 0.03. In order to comply with this requirement, baffles shall be installed on to the floodlights to ensure a ULR of 0.03 or less.

Luminous Intensity

AS4282 nominates Luminous Intensity limits where a light source (such as a floodlight) can be directly viewed from a residential dwelling, shown in Table 4 below:

TABLE 4 - MAXIMUM LUMINOUS INTENSITIES PER LUMINAIRE FOR EXTERNALLY ILLUMINATED SIGNAGE			
Environmental Zone	Non-Curfew L1 luminous intensity (cd)	Non-Curfew L2 luminous intensity (cd)	Curfew luminous intensity (cd)
A4	25000	50000	2500
A3	12500	25000	2500
A2	7500	12500	1000
A1	2500	5000	500
A0	For A0, I shall be as close to zero as practicable without impacting safety considerations.	For A0, I shall be as close to zero as practicable without impacting safety considerations.	0




There are no residents in the area with direct view of the light sources. The signage therefore complies with the Luminous Intensity requirements.

Summary

It can therefore be seen that the existing externally illuminated pylon signage complies with all relevant requirements of AS4282.

7. SEPP ASSESSMENT

Table 5 below outlines the illumination assessment criteria from the SEPP Industry and Employment Schedule 5 - Clause 7 Illumination. While the SEPP only applies to sites located on classified roads, our assessment references the guidelines as a best practice document in NSW. In addition to the criteria, responses have been included demonstrating that the existing signage is in compliance.

TABLE 5 7. ILLUMINATION ASSESSMENT CRITERIA		
Assessment Criteria	Response	Compliant?
Would illumination result in unacceptable glare?	The proposed signage complies with the Threshold Increment limits of AS4282, demonstrating that the illumination will not cause unacceptable glare.	
Would illumination affect safety for pedestrians, vehicles or aircraft?	The proposed signage complies with the Threshold Increment limits of AS4282, demonstrating that the illumination will not cause unacceptable glare. The small size of the signage and its relatively low intensity limits the risk to pedestrians, vehicles or aircraft.	
Would illumination detract from the amenity of any residence or other form of accommodation?	The proposed signage, when installed according to this report, complies with the illuminance (spill lighting) limits of AS4282, demonstrating that the illumination will not detract from the amenity of any residence or other form of accommodation	
Can the intensity of the illumination be adjusted, if necessary?	The dimming level of the floodlights cannot be adjusted, however the luminance level is less than half of the allowable maximum. As such, it is deemed unnecessary to dim the signage from its current level.	N/A
Is the illumination subject to a curfew?	The proposed advertising signage, when installed according to this report, complies with the limits required during curfewed operation under AS4282 (nominally between the hours of 11pm and 6am). This means that a curfew is not required.	N/A

8. SUMMARY

- The existing externally illuminated signage to be installed at Homebush Bay Dr, Flemington, NSW, shall operate at the following maximum luminances:

COMPLYING LUMINANCE LEVELS FOR DIGITAL ADVERTISEMENTS		
Lighting Condition	Max Permissible Luminance (cd/m2)	Compliant
Day	N/A - OFF	✓
Night Time	79	✓

- In order to comply with Threshold Increment and Upward Light Requirements, baffles shall be installed on to the floodlights in accordance with this report.
- The existing externally illuminated pylon signage has been found to comply with all relevant requirements of AS4282, the Transport Guidelines and SEPP Industry and Employment.
- In complying with the above requirements, the externally illuminated pylon signage shall not result in unacceptable glare nor shall it adversely impact the safety of pedestrians, residents or vehicular traffic. Additionally, the signage shall not cause any unacceptable amenity impacts to nearby residential dwellings or accommodation.

9. DESIGN CERTIFICATION

The externally illuminated pylon signage at Homebush Bay Dr, Flemington, NSW, if commissioned according to this report, complies with the following criteria, guidelines and standards:

- State Environmental Planning Policy (Industry and Employment) 2021
- Transport Corridor Outdoor Advertising & Signage Guidelines 2017
- AS/NZS 4282:2023 Control of the Obtrusive Effects of Outdoor Lighting



Ryan Shamier MIES

M.Des.Sc(Illumination) B.Eng (Elec)

Member of the Illuminating Engineering Society of Australia and New Zealand (MIES)

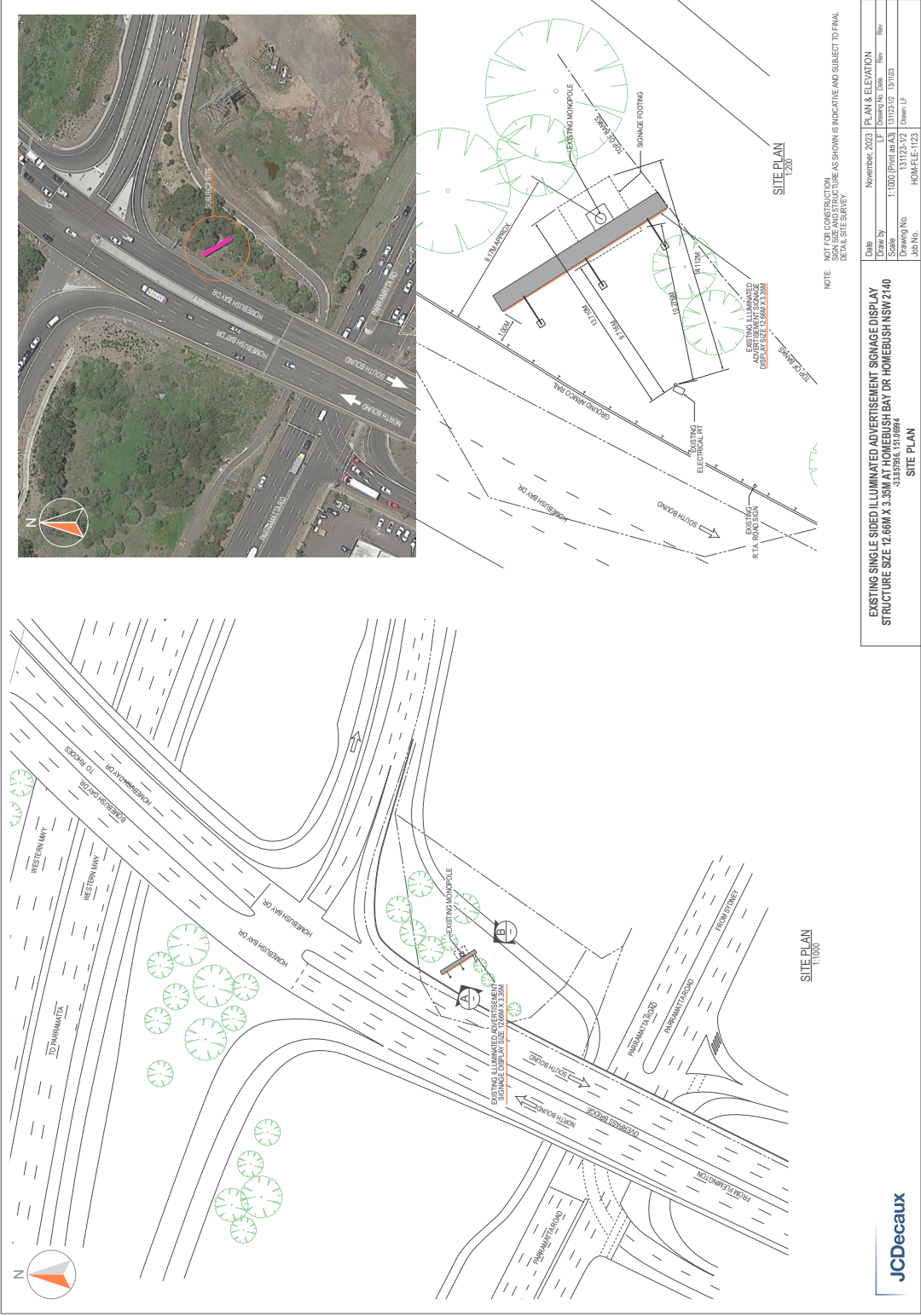
Registered Professional Engineer - New South Wales (PRE0000868)

Senior Lighting Designer

Electrolight Sydney

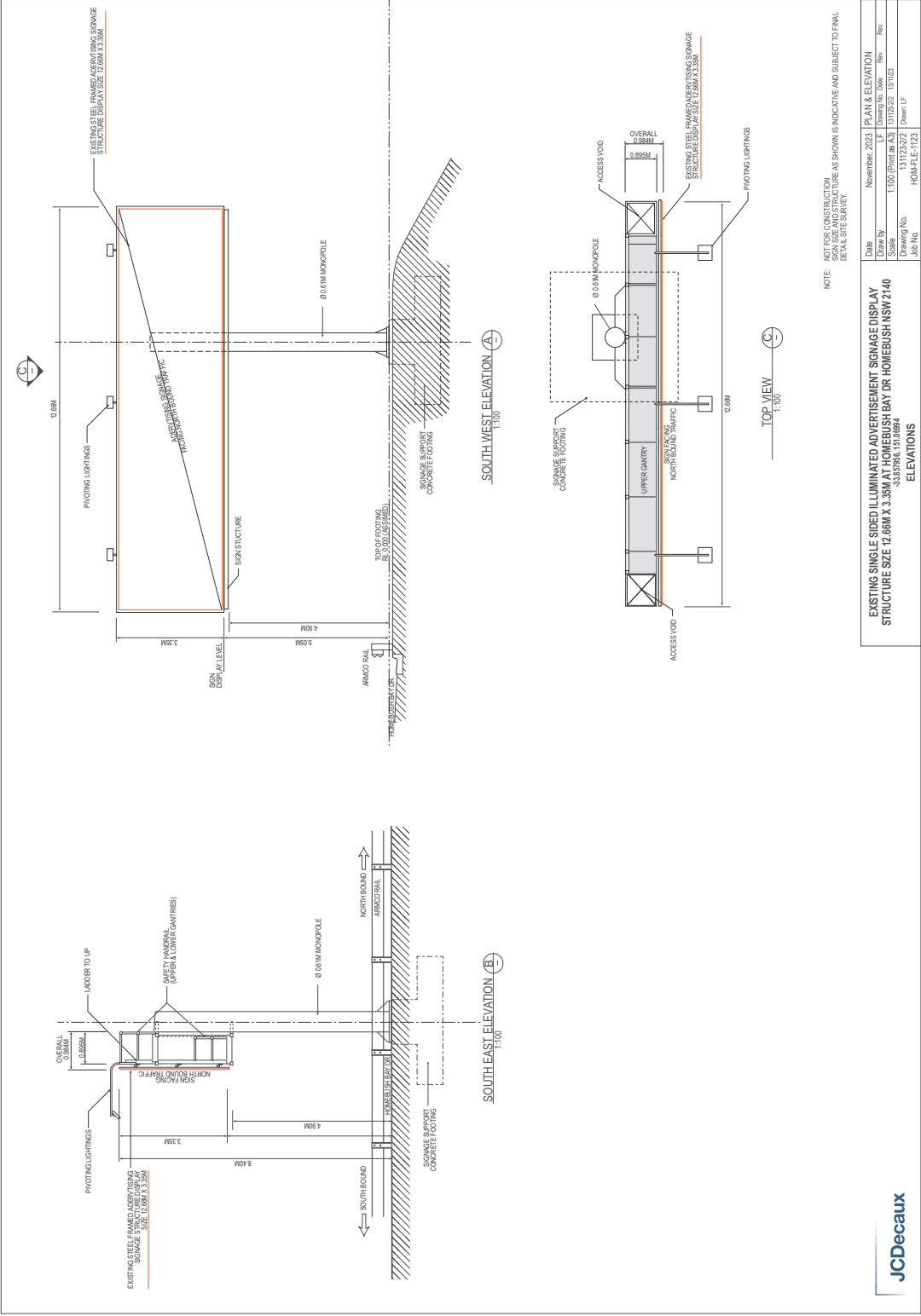
22/11/23

APPENDIX A
EXISTING SIGNAGE LOCATION & ELEVATIONS



APPENDIX A

EXISTING SIGNAGE LOCATION & ELEVATIONS



APPENDIX B

State Environmental Planning Policy (Industry and Employment) 2021

Schedule 5 Assessment criteria

(Clauses 8, 13 and 17)

1. Character of the area

- Is the proposal compatible with the existing or desired future character of the area or locality in which it is proposed to be located?
- Is the proposal consistent with a particular theme for outdoor advertising in the area or locality?

2. Special areas

- Does the proposal detract from the amenity or visual quality of any environmentally sensitive areas, heritage areas, natural or other conservation areas, open space areas, waterways, rural landscapes or residential areas?

3. Views and vistas

- Does the proposal obscure or compromise important views?
- Does the proposal dominate the skyline and reduce the quality of vistas?
- Does the proposal respect the viewing rights of other advertisers?

4. Streetscape, setting or landscape

- Is the scale, proportion and form of the proposal appropriate for the streetscape, setting or landscape?
- Does the proposal contribute to the visual interest of the streetscape, setting or landscape?
- Does the proposal reduce clutter by rationalising and simplifying existing advertising?
- Does the proposal screen unsightliness?
- Does the proposal protrude above buildings, structures or tree canopies in the area or locality?
- Does the proposal require ongoing vegetation management?

5. Site and building

- Is the proposal compatible with the scale, proportion and other characteristics of the site or building, or both, on which the proposed signage is to be located?
- Does the proposal respect important features of the site or building, or both?
- Does the proposal show innovation and imagination in its relationship to the site or building, or both?

6. Associated devices and logos with advertisements and advertising structures

- Have any safety devices, platforms, lighting devices or logos been designed as an integral part of the signage or structure on which it is to be displayed?

7. Illumination

- Would illumination result in unacceptable glare?
- Would illumination affect safety for pedestrians, vehicles or aircraft?
- Would illumination detract from the amenity of any residence or other form of accommodation?
- Can the intensity of the illumination be adjusted, if necessary?
- Is the illumination subject to a curfew?

8. Safety

- Would the proposal reduce the safety for any public road?
- Would the proposal reduce the safety for pedestrians or bicyclists?
- Would the proposal reduce the safety for pedestrians, particularly children, by obscuring sightlines from public areas?

APPENDIX C

OBTRUSIVE AND THRESHOLD INCREMENT LIGHTING CALCULATIONS

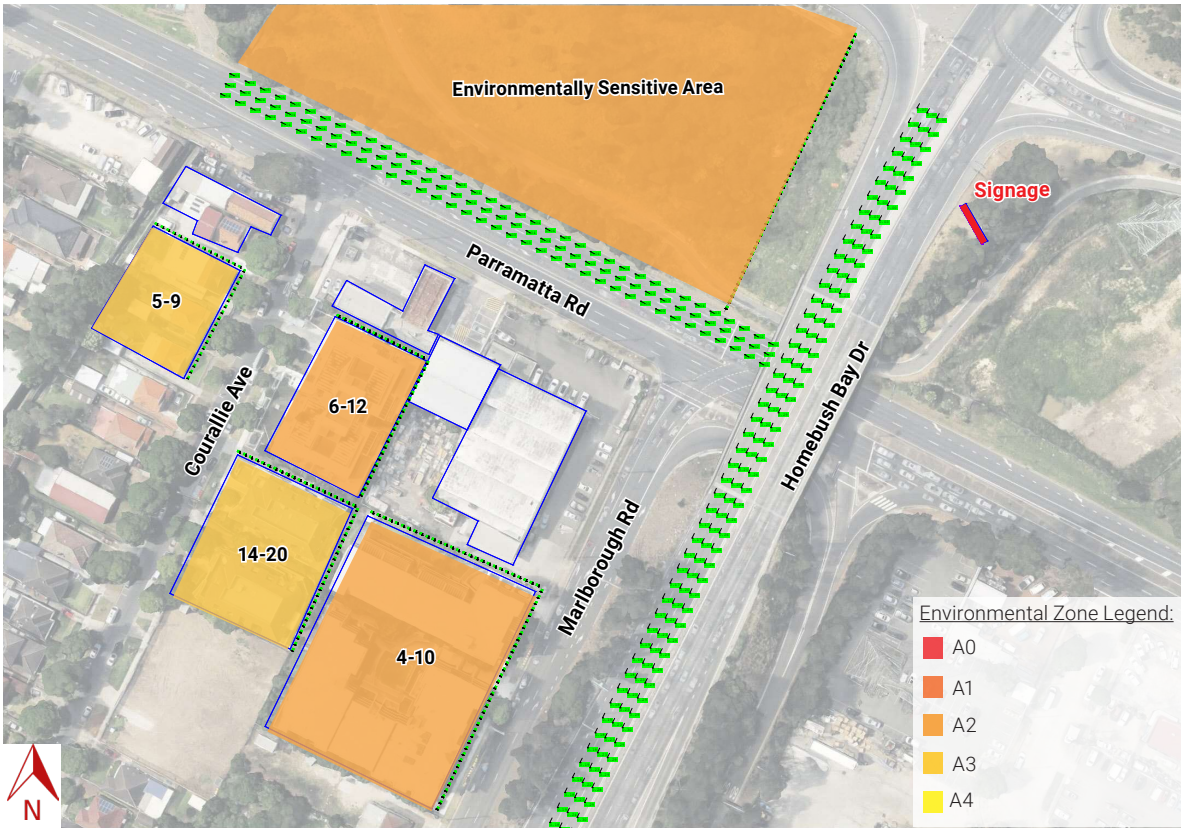
Calculation Summary			
Project: TI			
Label	CalcType	Units	Max
Homebush Bay Dr Eastbound	Obtrusive - TI	%	0.30
Parramatta Rd Eastbound	Obtrusive - TI	%	0.05

Calculation Summary			
Project: A3			
Label	CalcType	Units	Max
14-20 Courallie Ave Ill Seg1	Obtrusive - Ill	Lux	0.07
14-20 Courallie Ave Ill Seg2	Obtrusive - Ill	Lux	0.07
5-9 Courallie Ave Ill Seg1	Obtrusive - Ill	Lux	0.04
5-9 Courallie Ave Ill Seg2	Obtrusive - Ill	Lux	0.07

Calculation Summary			
Project: A4			
Label	CalcType	Units	Max
4-10 Marlborough Rd Ill Seg1	Obtrusive - Ill	Lux	0.12
4-10 Marlborough Rd Ill Seg2	Obtrusive - Ill	Lux	0.06
6-12 Courallie Ave Ill Seg1	Obtrusive - Ill	Lux	0.09
6-12 Courallie Ave Ill Seg2	Obtrusive - Ill	Lux	0.11
ESA - Parramatta Rd and Homebush Ill Seg1	Obtrusive - Ill	Lux	0.84

APPENDIX C

OBTRUSIVE LIGHTING AND THRESHOLD INCREMENT CALCULATIONS



APPENDIX C

OBTRUSIVE LIGHTING AND THRESHOLD INCREMENT CALCULATIONS

Obtrusive Light - Compliance Report

AS/NZS 4282:2019, A3 - Medium District Brightness, Curfew
Filename: 1096.136 Homebush Bay Dr LIA Rev A
17/11/2023 4:56:50 PM

Illuminance

Maximum Allowable Value: 2 Lux

Calculations Tested (4):

Calculation Label	Test Results	Max. Illum.	
14-20 Courallie Ave_III_Seg1	PASS	0.07	
14-20 Courallie Ave_III_Seg2	PASS	0.07	
5-9 Courallie Ave_III_Seg1	PASS	0.07	0.04
5-9 Courallie Ave_III_Seg2	PASS	0.07	0.07

Obtrusive Light - Compliance Report

AS/NZS 4282:2019, A4 - High District Brightness, Curfew
Filename: 1096.136 Homebush Bay Dr LIA Rev A
17/11/2023 4:56:01 PM

Illuminance

Maximum Allowable Value: 5 Lux

Calculations Tested (5):

Calculation Label	Test Results	Max. Illum.	
4-10 Marlborough Rd_III_Seg1	PASS	0.12	
4-10 Marlborough Rd_III_Seg2	PASS	0.06	
6-12 Courallie Ave_III_Seg1	PASS	0.09	
6-12 Courallie Ave_III_Seg2	PASS	0.11	
ESA - Parramatta Rd and Homebush_III_Seg1	PASS	0.84	

Threshold Increment (TI)

Maximum Allowable Value: 20 %

Calculations Tested (2):

Calculation Label	Adaptation Luminance	Test Results
Homebush Bay Dr Eastbound	5	PASS
Parramatta Rd Eastbound	5	PASS



JCDecaux

LUMINANCE MEASUREMENT REPORT

OUTDOOR ILLUMINATED SIGNAGE AT HOMEBUSH BAY DRIVE, FLEMINGTON

17 November 2023
Ref: 1096.136

Luminance Measurement Report
Existing Illuminated Signage at
Homebush Bay Drive, Flemington

Electrolight Australia Pty Ltd
ABN: 44 600 067 392

info@electrolight.com
www.electrolight.com

4/414 Bourke St
Surry Hills NSW 2010
T + 612 9267 4777

DATE	REV	COMMENT	PREPARED BY	CHECKED BY
17/11/23	A	Issued for Information	RMS	DHS

CONTENTS

1. INTRODUCTION 3

2. LUMINANCE MEASUREMENTS..... 3

APPENDIX A – SIGNAGE LUMINANCE MEASUREMENTS 5

1. INTRODUCTION

Electrolight was engaged by JCDecaux to provide a Luminance Measurement Report for the existing externally illuminated signage installed at Homebush Bay Drive, Flemington.

The signage is mounted on a stand-alone pylon structure and faces the northeast bound traffic on Homebush Bay Drive. The signage is illuminated using three top mounted LED Floodlights (specification unknown). On the night of measurement, the right most floodlight was not operational. As a result, measurements were taken on the left half of the sign, in order to get a representative average luminance of the entire sign when all flood lights are operational.

Further details are provided in Section 2 below.

2. LUMINANCE MEASUREMENTS

Luminance Measurements were undertaken on Tuesday 14th November 2023 at 8:30pm using a Gossen Mavo-Spot 2 luminance meter (Serial Number 7C41314). The meter was calibrated on 29th November 2022 by UNSW (Report #22298.2).

The luminance measurement methodology was as follows:

A 100% “full white” canvas skin was installed on the signage face for the measurement process, representing the worst case/maximum luminance the signage is capable of emitting – see Figure 1 below.



Figure 1: Existing Signage with 100% white skin applied

A minimum of 8 equally spaced measurements were taken across the left half of the signage face to provide a representative estimate of the average luminance level of the entire signage. Measurements were taken at approximately 75m from the signage in a viewing direction approximately normal to the signage and at a height of 1.5m above the ground.

Using the methodology and processes outlined in this report, the average measured luminance is as follows:

SIGN TYPE	SKY CONDITION	AVERAGE LUMINANCE (CD/M2)
Externally Illuminated LED Signage	Night time	79

It can be seen from the table above that the average luminance of the signage is **79 cd/m2**.

Note:
No lumen depreciation factors were applied to the luminance readings in this report.

The detailed results of the luminance measurements are shown in Appendix A.

Report and Measurements undertaken by:



Ryan Shamier

M.Des.Sc(Illumination) B.Eng (Elec)

Member of the Illuminating Engineering Society of Australia and New Zealand (MIES)

Registered Professional Engineer - New South Wales (PRE0000868)

Senior Lighting Designer

Electrolight

17/11/23

APPENDIX A – SIGNAGE LUMINANCE MEASUREMENTS

Elevation view of the existing signage with measuring points and corresponding luminance values (image not to scale and point locations indicative only).

